

# Super-secure collaborative data security platform

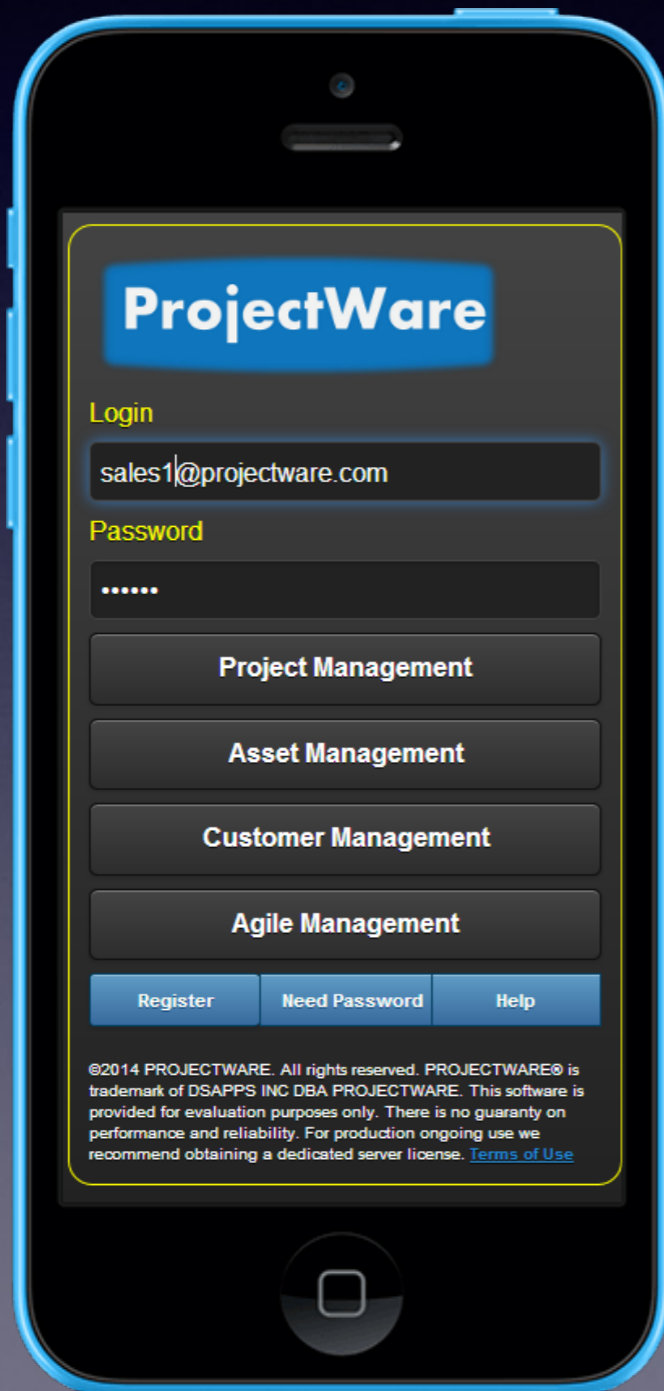


# Features

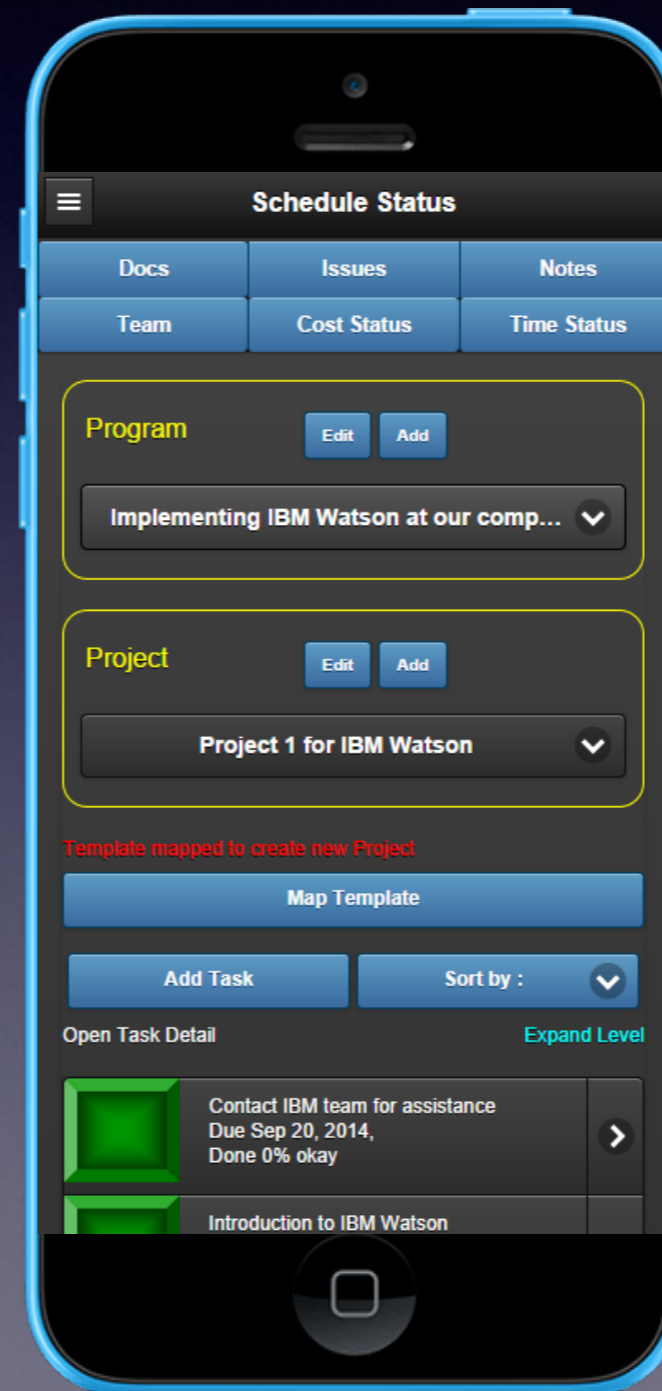
- Collaborative workflow environment - integrate documents with team programs, projects and tasks
- Identity security ensured via login and password
- Upload and retrieve documents
- Super-secure data repository combining data encryption and a patent pending data distribution and machine learning algorithm across a multitude of data storage servers
  - \* Optimizing security, reliability and performance
- Leverages private or public cloud servers without compromising data security

# Login

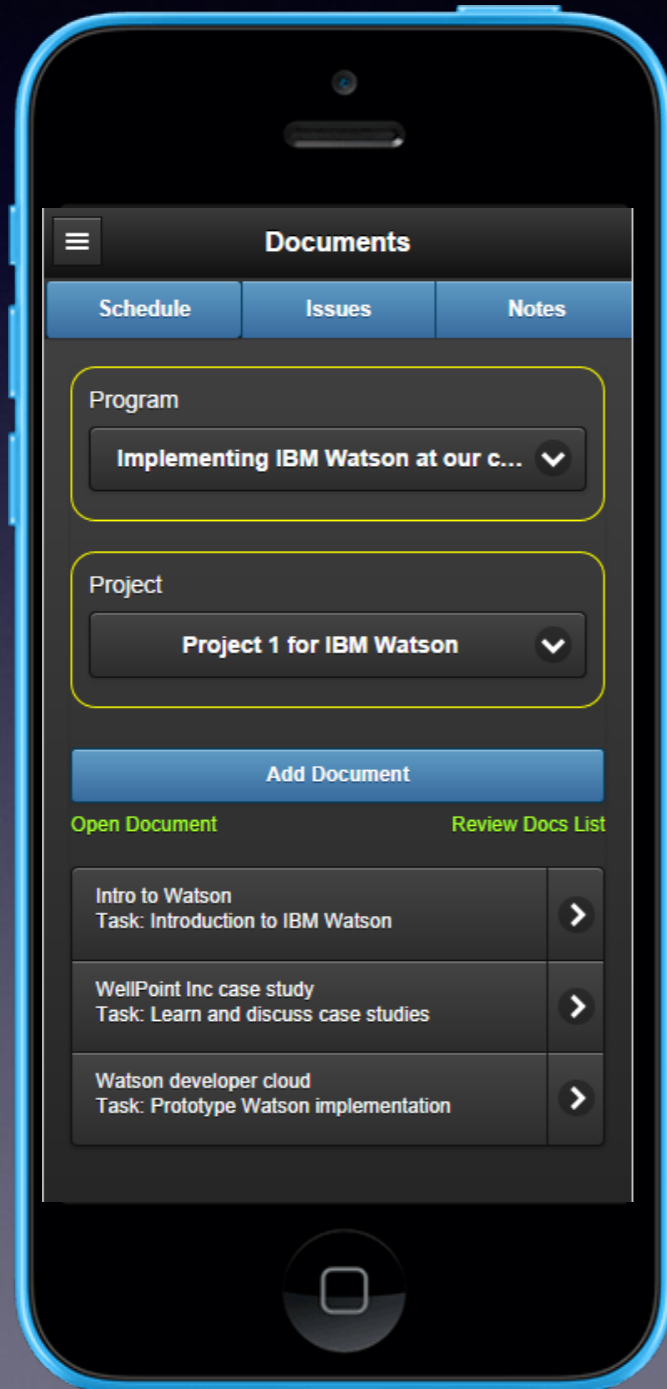
Login into collaborative platform



Create and manage programs, projects, tasks, documents



# Integrate Documents




IBM Software  
IBM Watson

Healthcare

## WellPoint, Inc.

*IBM Watson platform enables more effective healthcare preapproval decisions using evidence-based learning*



### Overview

**Increasing data volumes**  
Wellpoint needed to accelerate processing of physicians' treatment requests, save members' time and improve efficiencies in the approval process.

**Support for decision-making**  
The IBM® Watson platform uses hypothesis generation and evidence-based learning to generate confidence-scored recommendations that help nurses make decisions about utilization management.

**Accelerated processes**  
The Watson platform helps UM nurses make faster UM decisions about treatment requests, which will help accelerate pre-approval processes.

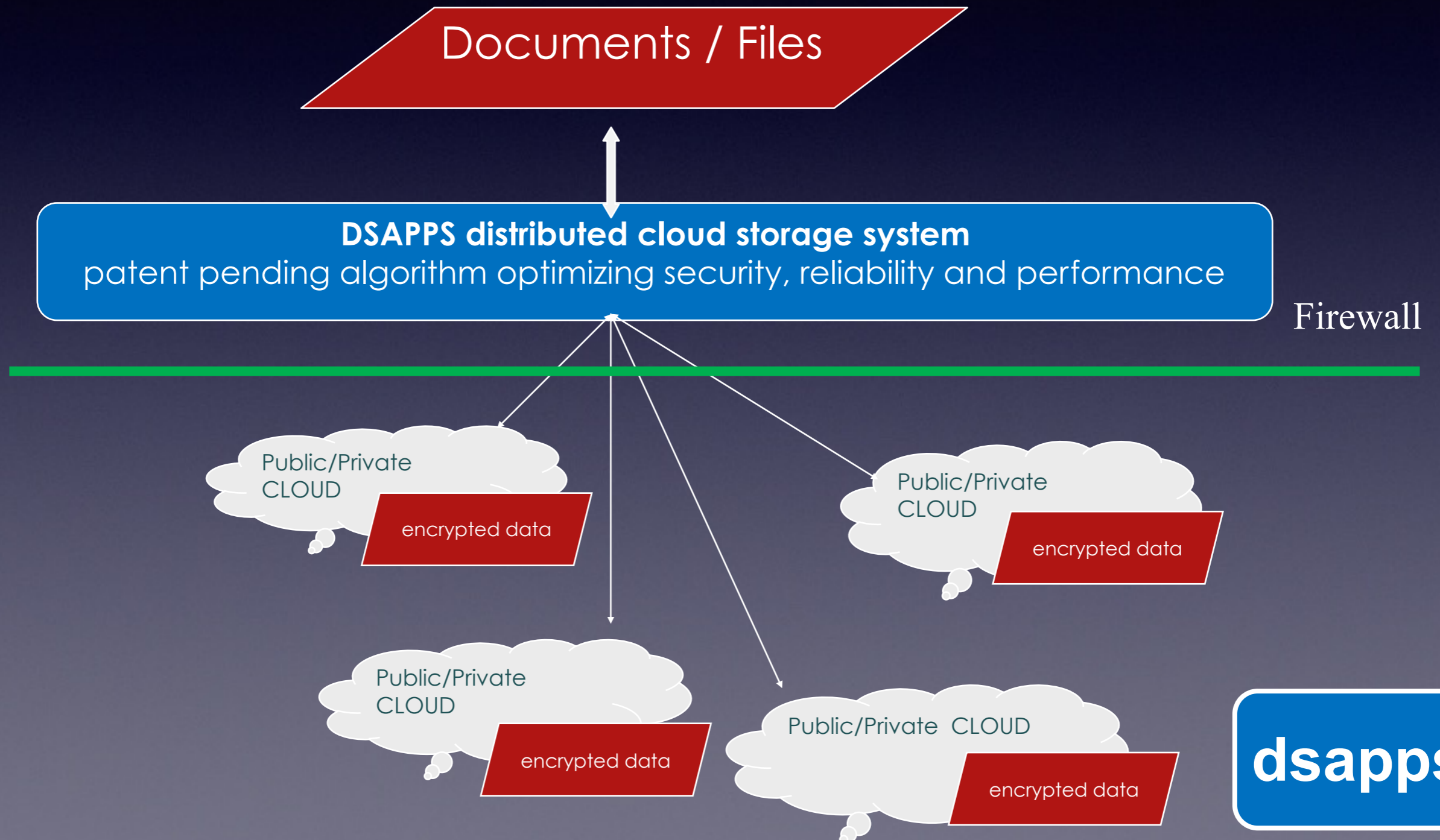
WellPoint, Inc. is an Indianapolis-based health benefits company. It has approximately 37 million health plan members and processes more than 550 million claims per year. With medical information doubling every five years, WellPoint saw an opportunity to apply the groundbreaking capabilities of IBM Watson™ in a way that could improve the quality and efficiency of healthcare decisions.

### Challenge

According to the Institute of Medicine, 30 percent of the USD2.3 trillion dollars spent on healthcare in the United States annually is wasted. While there are many factors contributing to this statistic, one step toward reducing waste is improving the utilization management (UM) process, which governs the preapproval of healthcare insurance coverage for many medical procedures. Improving response time, accuracy and consistency in the UM review process has been a goal of the entire industry. Attaining this goal is challenging, in part because of the volume of data that is analyzed in making UM decisions. When WellPoint's affected health



# Super-secure data security



# Super-secure collaborative workflow and document management

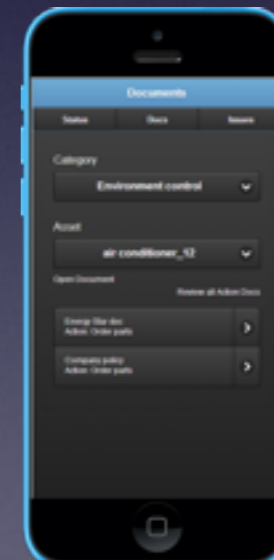
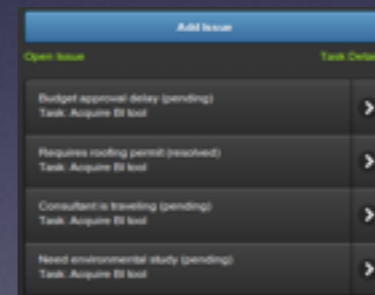
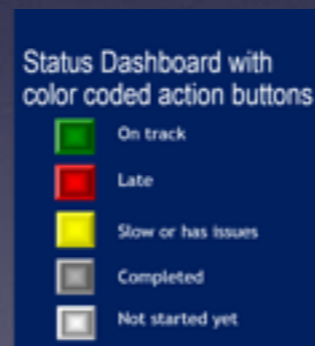
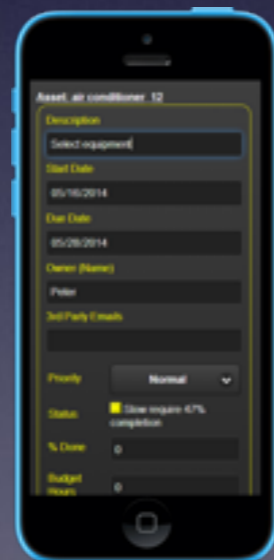
Setup Team  
Identify  
Owners

Communicate  
project plan

Track work  
progress

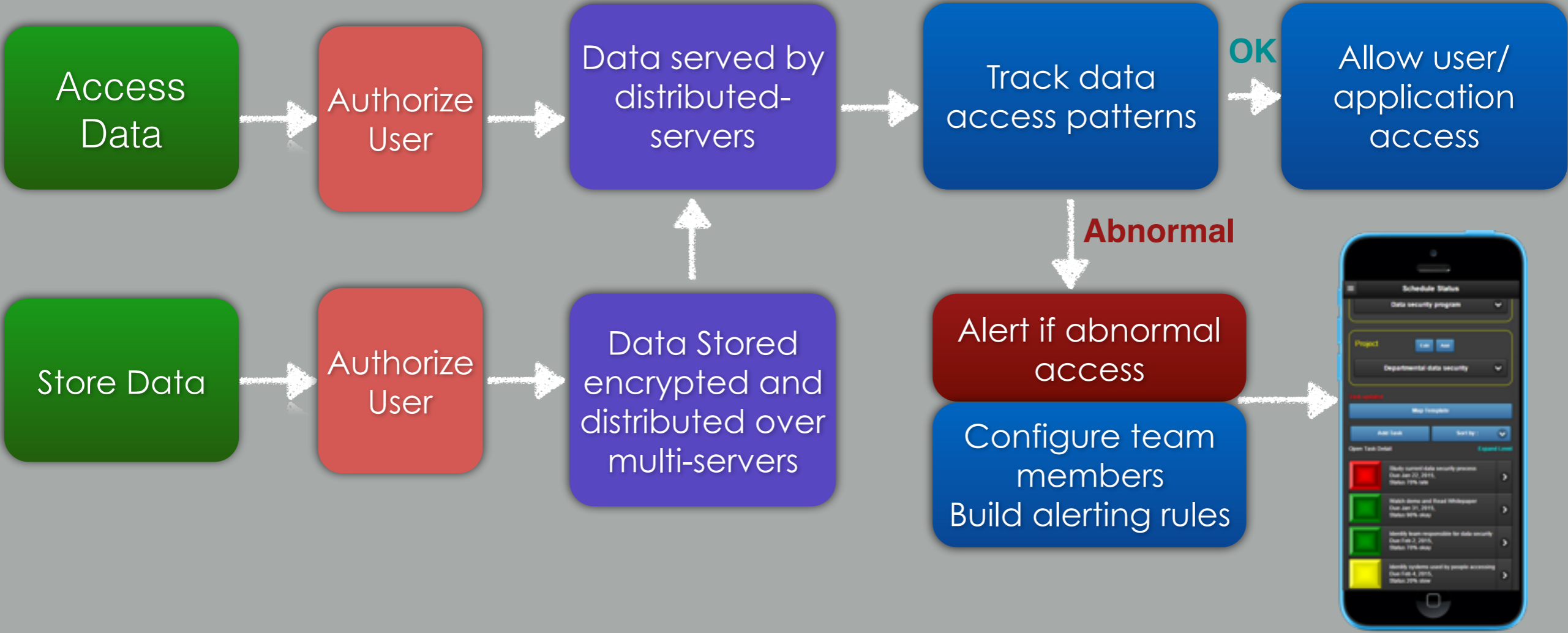
Resolve  
issues

Manage  
documents



dsapps

# Supports data security management process



**dsapps**  
distributed security apps